

# **EDGEWOOD PARK AND NATURAL PRESERVE MASTER PLAN**

## **I. BACKGROUND**

### **A. Purpose of the Edgewood Park and Natural Preserve Master Plan**

The 1982 adopted Edgewood Park Master Plan called for the development of a golf course. Since then, there have been several physical, legislative, and institutional changes affecting Edgewood Park and Natural Preserve (hereinafter called "Edgewood" or "the site") which signaled the need for this update. Key among the changes was the designation of Edgewood as a "Natural Preserve."

The purpose of this Edgewood Master Plan is to guide the future use, preservation, and management of Edgewood. The Master Plan provides a management framework for preserving significant environmental resources while providing for appropriate recreational and aesthetic opportunities. Upon assessing Edgewood's specific natural character, resources, and historical setting (see Appendices A and B), the Plan culminates in a set of policies to protect and preserve Edgewood's special resources in order that they may be appreciated by present and future generations.

### **B. Master Plan Planning Process**

The preparation of the Edgewood Master Plan began in June 1996. In August and September, two public workshops were conducted to afford the public the opportunity to express concerns, ask questions, generate new ideas, and provide additional information for inclusion into the Master Plan. In December 1996, March 1997, and April 1997, the Parks and Recreation Commission convened public hearings to consider the draft Plan. Extensive testimony was received from interested individuals and groups. Among the issues debated in this process (see Appendix C, Issues Analysis) was determining how much low-intensity recreational activity would be compatible with protecting the site's biotic resources.

This final Master Plan represents a concerted effort to mesh together divergent viewpoints within the limitations of earlier planning decisions. It draws on work by others conducted over the past 20 years, as well as correspondence, publications and discussions with interested parties, the scientific community, government agencies, and valuable testimony resulting from the public hearing process.

### **C. Summary Content of this Master Plan**

The Master Plan is divided into the following major sections:

The Background section generally overviews Edgewood's setting by describing the site's relative location, and existing land uses and development. In addition, the section provides a chronology of site ownership and land uses, laws, and institutional agreements affecting Edgewood.

The Goals and Objectives section expresses the desired direction for Edgewood's future based on stated community values, and legal and institutional parameters, as well as public input and research. This section provides the foundation upon which this Master Plan is prepared.

The Policies section presents the guidelines that the County will follow to implement the Master Plan. The policies represent the Preferred Alternative (Appendix D) and are divided into the following categories: goals and objectives; definitions and designations; permitted uses; natural resource protection; operations and maintenance; access, parking, and associated amenities; interpretive activities; coordination activities; and plan monitoring and amendment.

The Site Resources section (Appendix A) overviews both natural resources and man-made resources. Natural resources consist of both physical resources (topography, geology, soils, climate, etc.), and biological resources (vegetation and animal communities, unique species, scenic and aesthetic resources). Additionally, the laws that protect Edgewood's rare, threatened, and endangered species are described. The man-made resources discussion primarily overviews Edgewood's existing land uses (circulation, access, parking, facilities improvements, operating and maintenance practices, etc.). In particular, relevant land use agreements are described.

The Historical Setting section (Appendix B) reviews Edgewood's history as it relates to geology, vegetation, ownership and land uses, and trails.

The Issues Analysis section (Appendix C) identifies and analyzes the important resource and planning issues arising during the planning process. Opportunities and constraints affecting resource protection and recreational development are evaluated. Significant planning issues include: appropriate uses; natural resources protection; site development/improvements; trails maintenance and improvement; and circulation, access, and parking.

The Preferred Alternative section (Appendix D) briefly describes the planning

process that culminated in the Parks and Recreation Commission and Board of Supervisors approving a balanced management plan in which the primary objective is to protect, preserve and restore Edgewood's natural resources, while allowing existing low-intensity recreation activities to continue. Incompatible land uses, disturbance of sensitive habitats, and unauthorized activities are prohibited.

#### **D. Location and Description**

Close to urban centers, Edgewood Park and Natural Preserve is located within the borders of both the unincorporated San Mateo County lands and the City of Redwood City (see Figures 1a, 1b and 1c). The site's 467 acres is situated southeast of the intersection of Interstate Highway 280 (Junipero Serra Freeway) and Edgewood Road. It is bordered to the east and south by the residential subdivisions of Emerald Lake Heights and Emerald Lakes, respectively; to the north by the Pulgas Ridge Open Space of the Mid-Peninsula Regional Open Space District; and to the west by the County of San Francisco's Crystal Springs Watershed lands. Pacific Gas and Electric Company ("PG&E") operates a substation adjoining the southwestern corner of the property and has both gas and electric transmission lines across the site (as discussed under 'Utility Easements').

Edgewood's varied topology and complex geologic composition, formation placement and soil distributions support grassland, chaparral, oak woodland, and wetland. The particularly diverse flora and fauna include sensitive habitats with many endemic species, some under Federal and State protection. Chief among the sensitive habitats is the serpentine grassland and chaparral; the grassland, in particular, draws many visitors in spring, when its native wildflowers are blooming. Recreational development consists of the Old Stage Day Camp (hereinafter also referred to as "Old Stage"), a trails system which traverses the site from its four corners, ranger residences, two benches, and a parking lot. With the exception of the ranger residences, the facilities provide opportunities for youth camping, hiking, jogging, horseback riding, picnicking, nature observation and docent-led tours.

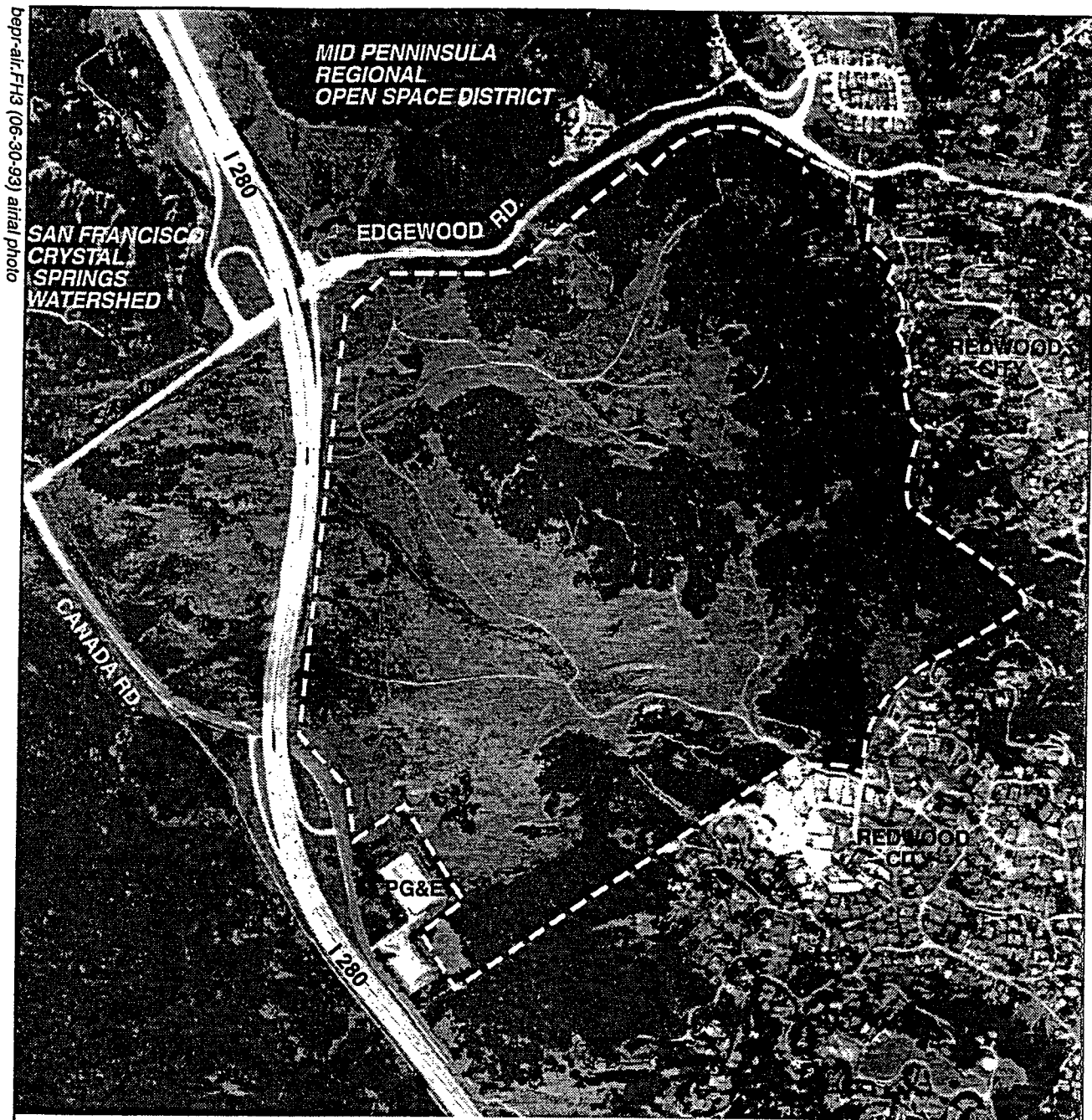
#### **E. Historical Review**


Ownership of Edgewood has changed several times; thus, many physical changes have occurred. (See Appendix B for historical information on geology, vegetation, trails, ownership and land uses, and site degradation from overgrazing and motorcycle use.) Historical records are sketchy at best. In the 1890's, the eastern slope of Edgewood was owned by John Isaac, a member of the State Board of Horticulture. About 1907, Henry C. Finkler purchased the property, as well as

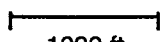




FIGURE 1c -- AERIAL VIEW



 NORTH

 1000 ft.

Source: Air Photo May 1993

additional nearby lands. In 1967, the site was sold for development of a new California State College campus.

In 1972, plans for the new campus were postponed and discussions began on the possibility of building a golf course on the site. In 1979, the San Mateo County Board of Supervisors passed a resolution to raise funds to acquire the site from the State for use as a park. On October 10, 1980, the County acquired Edgewood from the State of California. The Federal Secretary of the Interior's contingency fund provided initial funding with a \$965,200 grant toward the total price of \$2,029,000. The Midpeninsula Regional Open Space District ("MROSD") and San Mateo County agreed to share the remaining costs in a joint acquisition. Final acquisition was 467 of the original 477 acres, with 10 acres awarded to the San Mateo Public Works Department for a future right-of-way to widen Edgewood Road.

In January 1981, the San Mateo County Parks and Recreation Commission held the first of a series of public hearings regarding future use and development of Edgewood. Controversy over the use often focussed on the rare plants and animals inhabiting the roughly 147 acres of serpentine grassland on the site. Of the 29 speakers attending the public hearing, 8 voiced the desirability of a golf course at the site while the others recommended open space recreational uses such as hiking and equestrian trails, camping and picnicking. Ideas for a dog training facility and hang-gliding facility were also brought forth.

Based on a 1977 Attitude Survey for County Recreation Needs, a 1978 Recreational Needs Assessment Process and various public meetings, it was indicated that there was "... substantial interest for a golf course ..., preservation of open space, horseback riding trails, hiking trails."

Two alternative site proposals were discussed. Plan A included hiking, jogging, birdwatching, horseback riding, nature study, picnicking, a day camp, parking, and an interpretive center. Plan B included similar activities, and an 18-hole golf course. These alternatives were revised to address public and legal concerns such as the impacts on the threatened Bay checkerspot butterfly, and rare plants associated with the serpentine grassland on the site.

Although there was strong support behind each revised alternative, in August 1981, the County Parks and Recreation Commission voted to recommend Plan B as the preferred alternative for the forthcoming Edgewood Park Master Plan. In October 1981, the San Mateo County Board of Supervisors concurred and approved Plan B as the basis of the Master Plan. In June 1982, the Master Plan and a series of documents addressing environmental impacts were prepared. The

Final Environmental Impact Report (FEIR), certified in December 1982, included a series of biological studies assessing golf course impacts on the Bay checkerspot butterfly, which at the time was a candidate for Federal listing as an endangered species, and several rare plants growing in the serpentine grassland. The FEIR “determined that the subject [golf course] project, in its approved form, will have significant effect on the environment.” Based on the findings, the golf course portion of the Master Plan was revised several times in order to reduce environmental impacts.

Subsequently, the Stage II Final Supplement to the Environmental Impact Report for Edgewood County Park Master Plan was prepared to provide an update to the 1982 FEIR. The Stage II document was triggered by San Mateo County’s request for a conditional lease of over 19 acres of adjacent property owned by the City and County of San Francisco’s Public Utilities Commission for future development purposes. The Stage II environmental document was presented in a form of a supplement to the Stage I (1982) FEIR. The document presented new information, analyzed new environmental impacts, and offered additional mitigation measures. This document was certified in August 1984.

Since 1984, four plant species of concern have been found to occur at Edgewood, thus totaling ten rare plants documented at the site. At the time that the EIR was certified, San Mateo thornmint was the only plant protected under the State and Federal Endangered Species Acts. Since then, the site has also been found to contain two species of invertebrates which have been Federally-listed as Species of Concern: the blind harvestman, and the Edgewood microblind harvestman. More importantly, in 1987, the Bay checkerspot butterfly was listed as a Threatened species under the Federal Endangered Species Act which, as discussed below, was a key factor in preventing the development of a golf course.

On May 5, 1992, the Board of Supervisors designated Edgewood as a “Natural Preserve” (Resolution No.56062). On August 25, 1992, the Board commissioned a study on the feasibility of a golf course on approximately one-third of Edgewood. Future redesignation of this area would be considered based on the feasibility study.

In 1993, the County retained Thomas Reid Associates to study the environmental constraints to siting a golf course, as proposed by the 1982 Edgewood Park Master Plan. Reid’s 1993 Edgewood County Park Golf Course Site Constraints Analysis document concluded that the proposed golf course was not feasible since the Bay checkerspot is legally protected under the Federal Endangered Species Act. Reid stated that “the County cannot do anything to the site which might result in the “take” of the listed butterfly, without a permit issued under Section 10(a) of the

Act. Development of a golf course resulting in disturbance to serpentine grassland would constitute such a "take."

Subsequent to Reid's findings, in July 1993, the Board of Supervisors closed the issue of developing a golf course at Edgewood by:

- (1) Reaffirming that the entire 467 acres of Edgewood was designated as a "Natural Preserve," as defined in Resolution 56062.
- (2) Amending the 1980 Joint Powers Agreement ("JPA") with MROSD to prohibit a golf course or other high-intensity recreational uses at Edgewood Park (Resolution No.57385, dated July 27, 1993).
- (3) Modifying the existing Open Space Easement (called a "Modified Grant of Park, Recreation, Scenic and Open Space Easement" and referred to as "MROSD Easement") with the MROSD, pursuant to the JPA, to (1) eliminate high-intensity recreational uses as permissible uses in Edgewood, and (2) provide for a mechanism for future discussions with the Golden Gate National Recreation Area ("GGNRA") concerning future management of Edgewood (Resolution No.57386, dated July, 27, 1993).

Copies of these documents are included in Appendix A (Attachments No.1-3).

These changes, in effect, gave MROSD veto power over any future attempts to develop active recreational uses at Edgewood. In addition, the County committed itself to discuss with GGNRA, that agency's appropriate role in Edgewood's future.

Additionally, Friends of Edgewood Natural Preserve submitted a document called Edgewood County Park and Natural Preserve Master Plan, Final Draft January 1996 which emphasized the protection, preservation and restoration of Edgewood's special habitats and species. At the same time, it sought to promote enjoyment through low-intensity recreational use. The key to attaining these goals was controlled access, restriction of structures and improvements, public education on Edgewood's resources, and monitoring to ensure achievement of the goals.

The foregoing changes occurring since the 1982 Master Plan was written have resulted in the compelling need to rewrite the Edgewood Master Plan.

On May 20, 1997, the Board of Supervisors approved this Master Plan and in so doing, formally acknowledged that Edgewood is to be recognized as a "park and natural preserve".



## **II. GOALS AND OBJECTIVES OF THE EDGEWOOD MASTER PLAN**

The goals and objectives guiding preparation of this Master Plan are derived from applicable legislation and institutional agreements, as well as public input, and research. The goals and objectives of the Edgewood Master Plan are to:

1. Protect, preserve, and restore Edgewood's natural resources. This is the primary objective.
2. Promote environmental awareness and educational opportunities to ensure responsible stewardship of Edgewood's rare, endangered, and fragile natural resources.
3. Ensure public enjoyment of Edgewood through low-intensity recreational uses that minimize the need for new construction.
4. Maintain and manage site improvements at Edgewood, thereby guaranteeing the continuance and maintenance of authorized trails.
5. Provide access to Edgewood that meets visitor and public service provider needs. Public service providers include emergency response, utility, and park maintenance personnel.



### **III. POLICIES**

The County will:

#### **A. GOALS AND OBJECTIVES**

**1. Protect Natural Resources**

Protect, preserve, and restore Edgewood's natural resources. This is the primary objective.

**2. Promote Environmental Awareness**

Promote environmental awareness and educational opportunities to ensure responsible stewardship of Edgewood's rare, endangered, and fragile natural resources.

**3. Ensure Public Enjoyment**

Ensure public enjoyment of Edgewood through low-intensity recreational uses that minimize the need for new construction.

**4. Maintain and Manage Site Improvements**

Maintain and manage site improvements at Edgewood, thereby guaranteeing the continuance and maintenance of authorized trails.

**5. Provide Adequate Access**

Provide access to Edgewood that meets visitor and public service provider needs. Public service providers include emergency response, utility, and park maintenance personnel.

#### **B. DEFINITIONS**

**6. Definition of Low-Intensity Recreation Uses**

Define low-intensity recreation uses as passive recreation uses that will not create a direct or cumulative adverse environmental impact. Such uses include, but are not limited to, on-trail hiking, walking, jogging, horseback riding, nature observation, education, docent-led group tours, and picnicking and camping in the Old Stage Day Camp area.

**7. Definition of High-Intensity Recreation Uses**

Define high-intensity recreation uses as active recreation uses which may create a direct or cumulative adverse environmental impact. Such uses include, but are not limited to, golfing, bicycling, use of motorized vehicles, tennis, swimming, and special event community-sponsored runs or walks.

**8. Definition of Sensitive Habitats**

Define sensitive habitats as those areas which (1) include, or potentially could include, rare or unique species of animals or plants, or (2) have a unique or special biological value, and are easily subject to degradation or disturbance.

Sensitive habitats include, but are not limited to, habitats containing or having the potential to contain species legally protected and listed by U.S. Fish and Wildlife Service as endangered or threatened, and/or listed by California Department of Fish and Game as rare, threatened, endangered, or candidate for listing. At Edgewood, sensitive habitats consist of: areas of serpentine soils; riparian corridors; wetlands; bird nesting and feeding sites; and areas of special scientific study.

**9. Definition of Authorized Trails**

Define authorized trails as those trails designated and maintained by the County Parks and Recreation Division, for permitted low-intensity uses.

**10. Definition of Viewpoint**

Define viewpoint as a location along an authorized trail that affords distinctly scenic views of: (1) the site's natural landscape, or (2) the landscape of land beyond the site. Views may include hills and swales, wetlands, streams, serpentine grassland and associated wildflower field, San Francisco Bay, and San Francisco Watershed.

**C. DESIGNATIONS**

**11. Designation of Sensitive Habitats**

Designate those areas as sensitive habitats, as determined by Parks and Recreation Division, and shown on Figure 2.

**12. Designation of Authorized Trails**

Designate the following trails as authorized trails: Clarkia Trail, Edgewood Trail, Ridgeview Loop, Serpentine Loop Trail, Sylvan Trail, Inspiration Heights Trail, Franciscan Trail, and Trail 1B, as determined by Parks and Recreation Division, and shown on Figure 2.

**13. Designation of Viewpoints**

Designate the following locations as viewpoints: Points A, B, C and D, as determined by Parks and Recreation Division, and shown on Figure 3.

**D. PERMITTED USES**

**14. Permitted Uses**

Permit only the following uses and development at Edgewood when shown to pose no adverse impact on sensitive habitats and are compatible with the site's natural resources:

- a. Low-intensity recreation uses as stated in Policy 6.
- b. Low-intensity education, nature observation, research, and other interpretive activities.
- c. Special event community-sponsored runs or walks, subject to permit approval by Parks and Recreation Division.
- d. Restoration of damaged habitat, subject to permit approval by Parks and Recreation Division and consultation with appropriate Federal and State authorities.
- e. Maintenance of existing authorized trails, buildings and structures.
- f. Placement of signs, protective barriers, and other minimal service structures/facilities, as deemed appropriate or necessary by the Director of Parks and Recreation.
- g. Construction of parking/staging areas, interpretive center, toilets, and benches, to the extent shown on Figure 3, and as authorized by these policies.
- h. Other related uses or development, subject to approval by Parks and Recreation Commission, at a public hearing, finding that the proposed use, development, or facility conforms with goals and objectives of this Plan.

FIGURE 2 -- SENSITIVE HABITATS AND AUTHORIZED TRAILS

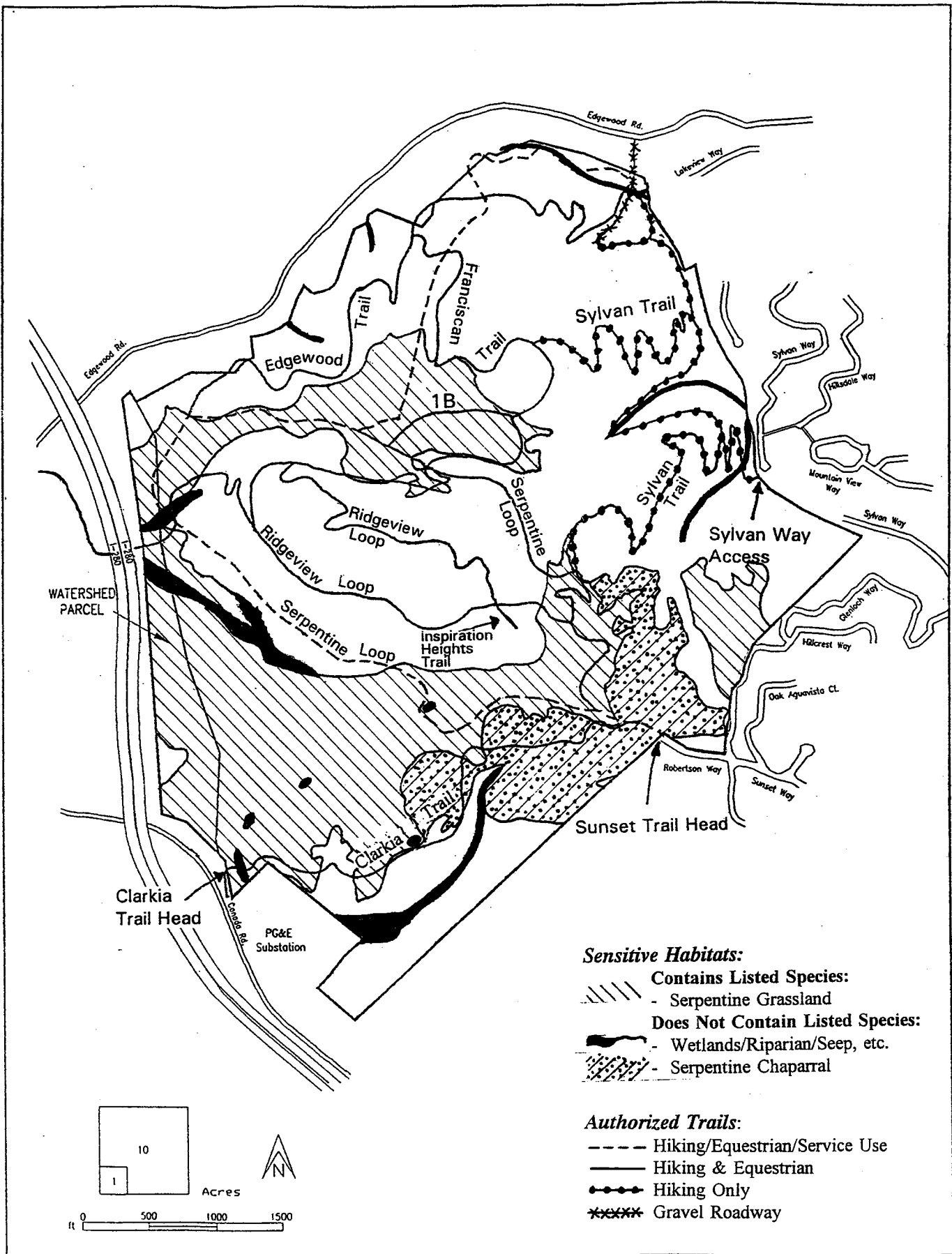
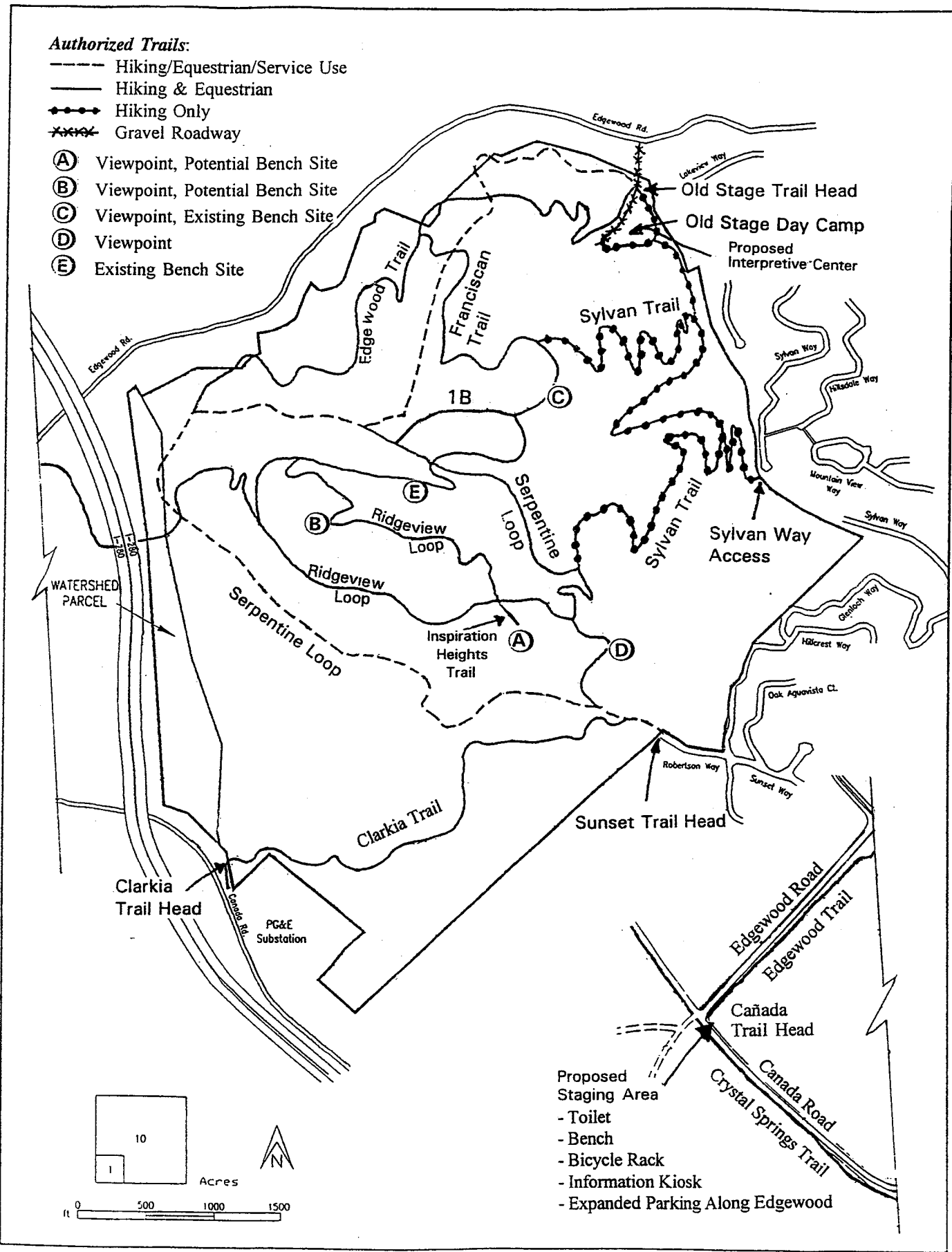


FIGURE 3 -- VIEWPOINTS AND IMPROVEMENTS



**15. Restricted Bicycle Use**

Continue to prohibit the use of bicycles in Edgewood, except to access a bicycle rack.

**16. Expressly Prohibited Uses**

Prohibit the following uses at Edgewood:

- a. High-intensity recreation uses, except community-sponsored runs or walks, as permitted by Policy 14c
- b. Livestock grazing
- c. Dog-walking, except for guide dogs on leash
- d. After-hours use.

**E. NATURAL RESOURCE PROTECTION**

**17. Compile a Comprehensive Resource Inventory**

Compile a comprehensive inventory of all natural resources at Edgewood, including soils, plants, and animal species. The inventory shall be prepared and updated on a regular basis with the coordinated efforts of the Trails, and Fish and Wildlife Advisory Committees, and other recognized stakeholder groups, for acceptance by the Parks and Recreation Commission.

**18. Evaluate and Select A Preferred Resource Management Strategy**

Evaluate all existing and potential natural resource management techniques for Edgewood, including methods to prevent unwanted visitor contact, protect and restore native species and their habitat, and control invasion of non-native species (e.g., hand-weeding, mechanical mowing, controlled burning, use of biodegradable herbicides, and protective barriers (to separate or buffer sensitive habitats from trail impacts)).

Select, implement and assess the effectiveness of the preferred strategy. The evaluation and strategy selection shall be conducted with the coordinated efforts of the Trails, and Fish and Wildlife Advisory Committees, and other recognized stakeholder groups, for consideration by the Parks and Recreation Commission.

**19. Restrict Wildlife Release**

Restrict wildlife release to species that are native to Edgewood, subject to permit approval.

**20. Restrict Native Plant Collection**

Restrict the collection of Edgewood native plants and seeds except for habitat recovery or re-introduction purposes. Collection shall be subject to permit approval by Parks and Recreation Division, and approval by State and Federal authorities if such collection involves species legally protected and listed by U.S. Fish and Wildlife Service as endangered, or threatened, and/or listed by California Department of Fish and Game as rare, threatened, endangered, or candidate for listing.

**21. Enforce Federal, State, and Local Resource Protection Laws**

To the extent authorized, enforce all applicable Federal, State, and local regulations governing resource protection and management at Edgewood.

**22. Support Volunteer Resource Protection Programs**

Support, encourage and recognize volunteer programs which reflect stakeholder diversity, help educate visitors, and protect and restore sensitive habitats at Edgewood.

**23. Monitor and Verify Effectiveness of Resource Management Activities**

Monitor and verify the effectiveness of activities directed at protecting, restoring, and preserving Edgewood's natural resources to ensure that the integrity of protected species and their habitat are not threatened.

**F. OPERATIONS AND MAINTENANCE**

**24. Keep Authorized Trails Open Year-Round**

Keep authorized trails open year-round for pedestrian and equestrian use, except when temporary trail closure is necessary for safety, maintenance, or resource management/protection reasons, as determined by the Parks and Recreation Director. Temporary trail closure shall not exceed 30 days. If trail closure exceeds 30 days, continued closure requires approval of the Board of Supervisors.

**25. Repair and Maintain Authorized Trails**

Repair and maintain authorized trail surfaces regularly and as necessary to: (1) control soil erosion, (2) conform with the original trail design, and (3) maintain year-round access. Where material found at trail site is inadequate, use only:

- a. On-site native rock shown:
    - (1) not to exceed 5% asbestos content, and
    - (2) will not disrupt the site from which it is extracted; or
  - b. Where native rock cannot be used or where inadequate drainage conditions exist:
    - (1) Chemically inert rock that does not contain any biologic material, as follows:
      - (a) Quarried chert shall be used, unless deemed infeasible.
      - (b) If use of quarried chert is not feasible, quarried granite or basalt shall be used.
- OR
- (2) Raised walkways or "duck walks" constructed of redwood or pressure-treated fir.

**26. Close and Restore Unauthorized Trails**

Close and restore all unauthorized trails to their natural state. Unauthorized trails include all existing trails or routes that have not been designated as "authorized trails".

**27. Rigorously Administer County Park Regulations**

Continue to rigorously administer the provisions of the County Ordinance Code governing activities at County parks, particularly Chapter 3.2.40.

**28. Maximize Resource Protection Operations**

Maximize resource protection at Edgewood through operational efforts that include:

- a) Aggressively enforcing Edgewood's visitor use regulations, particularly prohibition of (1) after-hours use, (2) use of unauthorized trails, and (3) bicycling and dogs.
- b) Posting restrictive, directional, and interpretive signs at appropriate locations to reduce visitor incursion of sensitive habitats, including signs prohibiting use of unauthorized trails.
- c) Erecting barriers around sensitive habitats where unlawful visitor access is likely.

**29. Reduce Maintenance and Construction Costs**

Unless specified otherwise, select maintenance and construction materials and processes that reduce costs while protecting environmental quality.

**30. Support Volunteer Maintenance Programs**

Support, encourage and recognize volunteer programs which reflect stakeholder diversity, and help maintain and operate Edgewood's trails and improvements.

**31. Monitor the Effectiveness of Operations and Maintenance Efforts**

On a regular basis, monitor and evaluate the effectiveness of operations and maintenance efforts performed by staff and volunteers. If shown to be ineffective, efforts will be changed in favor of others which may prove to be more effective in protecting and maintaining Edgewood.

**G. ACCESS, PARKING, AND ASSOCIATED AMENITIES**

**32. Promote Use of Off-site Parking Areas**

Promote the use of nearby off-site parking areas, particularly during peak periods when the on-site parking area is full.

**33. Provide Parking for Buses**

Continue using the County-owned gravel area adjacent to the Old Stage Day Camp parking lot to accommodate a mix of automobiles and buses.

**34. Keep Sylvan Way Access Open**

Strive to keep the Sylvan Way Access open.

**35. Provide Bicycle Racks**

Provide bicycle racks at or near each Edgewood entry point and suitable off-site parking areas.

**36. Provide Access and Amenities for Disabled Visitors**

Where feasible, provide access and amenities for disabled visitors that meet minimum Americans with Disabilities Act requirements. Improvements shall be focussed on the Old Stage Day Camp and parking lot, and amenities shall, at minimum, include accessible toilets, benches, and picnic tables.

**37. Investigate Feasibility of New Staging Area**

Investigate the feasibility of developing the Edgewood Road/Cañada Road off-shoulder parking area as a visitor staging area with development limited to a bicycle rack, bench, information kiosk, and low maintenance, ecological toilet. Consideration will also be given to meeting the minimum Americans with Disabilities Act requirements for disabled visitors.

**38. Provide Trailside Benches**

Provide a wooden bench at each of the following authorized trail locations when determined by the Parks and Recreation Commission, at a public hearing, that there is a compelling reason to place a bench at that location:

- Point A (potential new bench site at viewpoint on Inspiration Heights)
- Point B (potential new bench site at viewpoint along Ridgeview Loop Trail)
- Point C (existing bench at viewpoint along Sylvan Loop Trail)
- Point E (existing bench along Ridgeview Loop Trail).

If a new bench placement is implemented, it shall be subject to an initial 12-month review, at which time continuance will be determined by the Parks and Recreation Commission.

**39. Designate Service Access Routes**

Coordinate with Edgewood service providers, including fire, utility and emergency personnel, to formally designate service access routes and procedures. Designated access routes will, to the extent possible, make maximum use of existing authorized trails. Any designated route that involves unauthorized trail use or additional development shall require approval by the Parks and Recreation Commission at a public hearing.

**H. INTERPRETIVE ACTIVITIES**

**40. Support Docent Programs**

Support, encourage and recognize docent programs that help educate the public in understanding and appreciating Edgewood's natural resources and uniqueness.

**41. Promote Interpretive Activities**

Promote interpretive activities, including distribution of printed educational brochures, descriptive displays and signs, information kiosks, docent-led hikes, and birding activities.

**42. Investigate Feasibility of Small-Scaled Interpretive Center**

Investigate the feasibility of constructing a low-intensity, small-scaled interpretive center at the Old Stage Day Camp. Develop the interpretive center if shown to be feasible.

**I. COORDINATION ACTIVITIES**

**43. Cooperate and Coordinate for Efficient Services**

When implementing this Plan, cooperate and coordinate with surrounding park, open space, recreation, and service providers to provide efficient and effective services and to avoid duplication. Providers include, among others, Midpeninsula Regional Open Space District, Golden Gate National Recreation Area, San Francisco Water Department, PG&E, CDF Fire, Stanford University's Center for Conservation Biology, and the Filoli Center.

**44. Support and Participate in Development of Regional Trail Links**

Support, encourage and participate in the development of a system of trails that link Edgewood with surrounding park, open space, and recreation facilities, including Pulgas Ridge Open Space Preserve, Phleger Lands, Huddart County Park, and Wunderlich County Park. In developing regional trail links, special attention must be paid to the eventual impacts on Edgewood's natural environment.

**J. PLAN MONITORING AND AMENDMENT**

**45. Evaluate Edgewood Master Plan**

When necessary and feasible, review and evaluate the effectiveness of the Edgewood Park and Natural Preserve Master Plan in attaining the stated goals and objectives. Amend the Plan when the Parks and Recreation Commission determines it is necessary. The Plan amendment process shall require public hearings before the Parks and Recreation Commission and the Board of Supervisors.

